

GTV COMPACT SERIES

One controller for various processes



In North America
Spraywerx Technologies inc.
Ph:604 306 2061
E mail: aburgess@spraywerx.com
www.spraywerx.com

GTV COMPACT SERIES

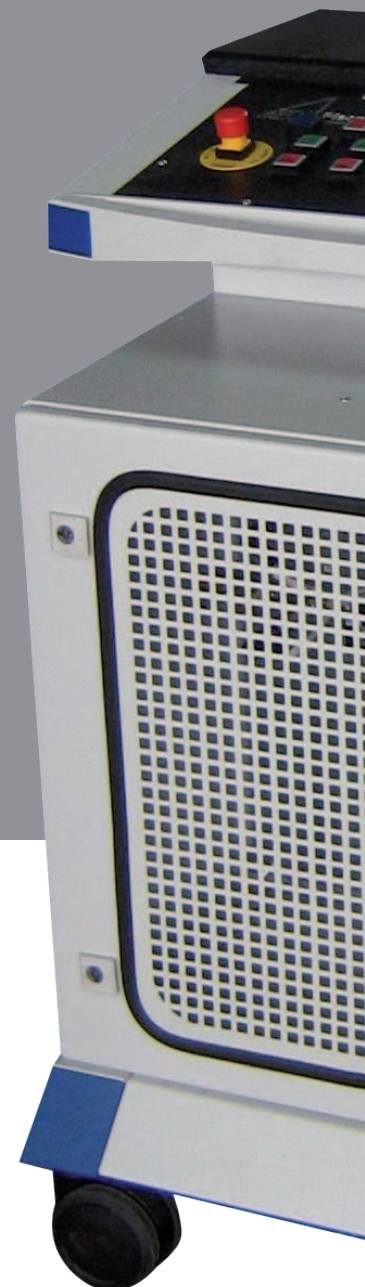
The ergonomically styled operator unit contains the complete electrical control unit consisting mainly of the Siemens PLC Type S7 and the Siemens Operator panel TP177 .

The adjustment and management of the spray parameters will be performed by the Touch Screen of the Operator Panel. The actual operating of the equipment is carried out using heavy duty push buttons and keys. The easy and clearly readable 16 color 5.7" monitor offers the possibility an uncomplicated process monitoring. The Operator Panel allows storing of more than 100 spray recipes.

The integrated but isolated gas cabinet contains the components for closed loop gas control as well as compressed air control. Furthermore the integrated powder feeder unit is compatible to GTV's PF series. The hopper (Volume 0.3, 1.5 and 5.5 Liter available) can be changed fast and easily.

The GTV compact controller unit is a mobile, gas massflow controlled closed loop controller and operating unit for the following TS processes:

- | | |
|---------------------|------------------------------|
| ■ Wire flame spray | 15E, 5K, 7K |
| ■ Powder flame | 6P, USJ, MSJ |
| ■ HVOF air cooled | GLC, GLC ID, Typhoon |
| ■ HVOF water cooled | Top Gun, DJ, Jet Kote |
| ■ Plasma | P2, 3MB, 9MB, F4/F6, SG100 |
| ■ Plasma ID | F1, 11MB |
| ■ Combination | VOF/Wire flame/ Powder flame |



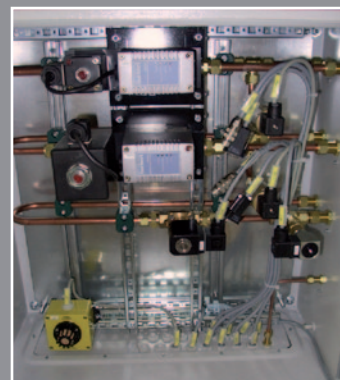


Technical data

Dimensions:	600 x 600 x 1.000mm
Weight:	ca. 140 kg
Voltage:	230V/50Hz od. 110V/60Hz
Controller:	Siemens S7-300
Display:	Siemens TP 177
Gas control:	closed loop mass flow controlled
Gas warning device:	included



PLC control cabinet



Gas control cabinet

COMPACT SERIES GLC

Air cooled torches
HVOF-/Powder flame-/ Wire flame guns

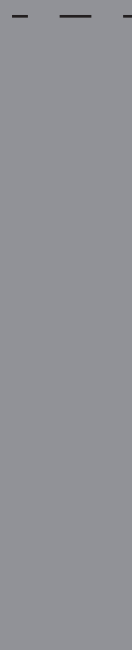


Water cooled HVOF torches

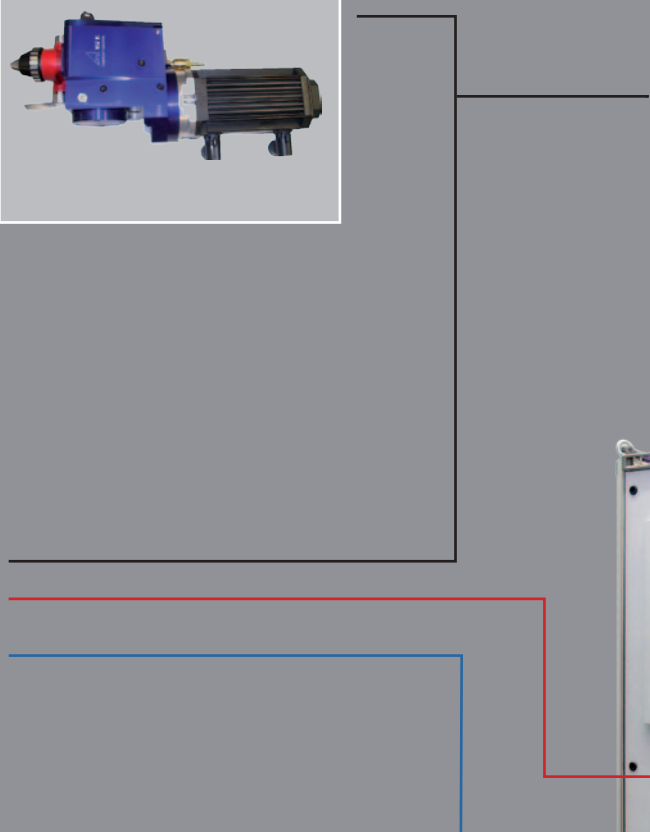
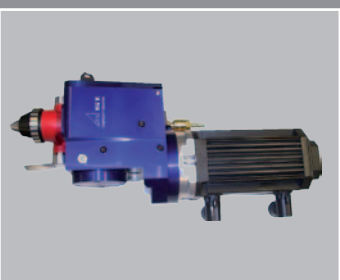




GLC

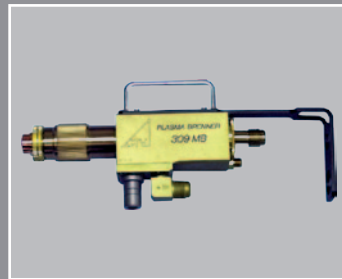


SK 27



PLASMA COMPACT SERIES PLC

Plasma torches



PLC



PPC



Jam Box



SK 32





Ever since the company was established in 1982, the name GTV has stood for top quality and a high level of delivery reliability for all types of thermal spray products.

GTV provides its customers with many years of experience in all aspects of the high-technology field of thermal spray technology, enabling them to make use of the effective and efficient GTV system solutions in order to gain a substantial competitive advantage in the market.



GTV GmbH

Gewerbegebiet „Vor der Neuwiese“, D-57629 Luckenbach, Germany

Phone: +49 (0)2662 95 76-0, Fax: +49 (0)2662 95 76-30

E-Mail: office@gtv-mbh.de, Internet: www.gtv-mbh.de