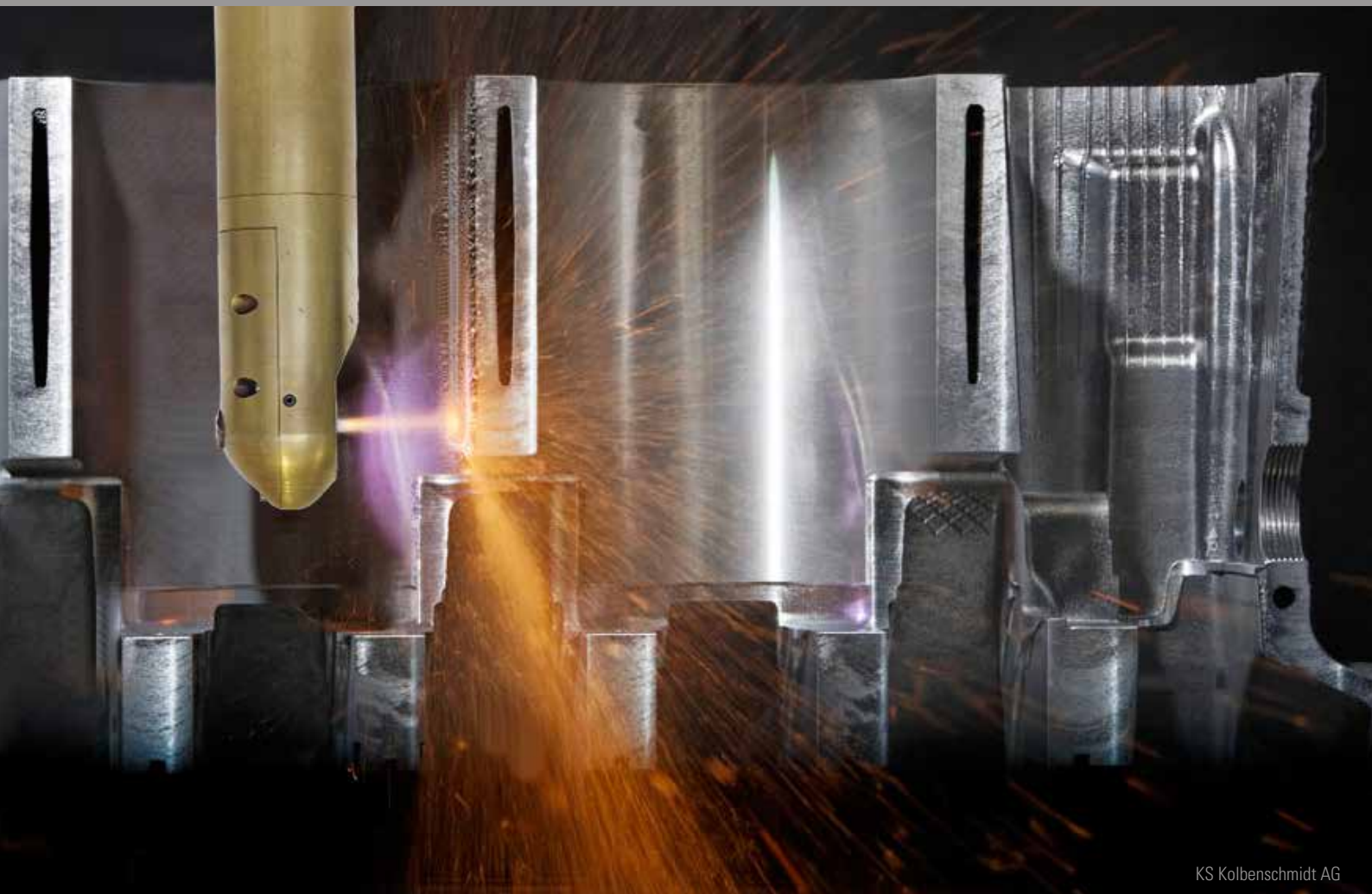


GTV RSW COATING

The technical standard in automotive industry
has been new defined

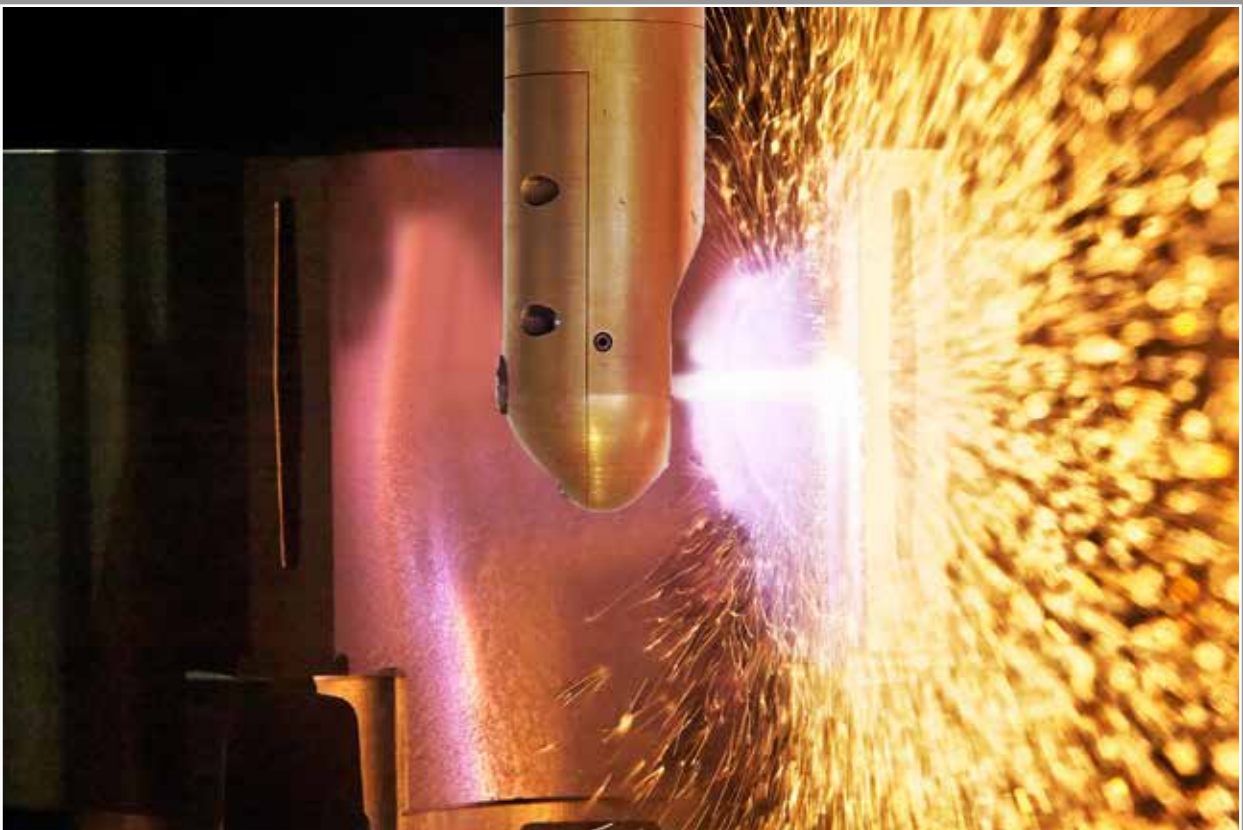


KS Kolbenschmidt AG

In North America
Spraywerx Technologies inc.
Ph:604 306 2061
E mail: aburgess@spraywerx.com
www.spraywerx.com

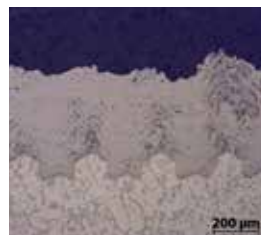
GTV RSW COATING

The **RSW (Rotating Single Wire)** spray technology is used in industrial applications for economical replacement of cast iron liners, which are pressed or casted as cylinder sleeve into aluminium cast engine blocks.

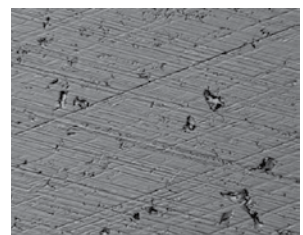


RSW Coating features:

- Reduced friction due to a defined ratio of porosity (oil retention volume)
- Weight reduction (coating thickness 150µm), leads to
- Improved heat transfer, leads to
- Reduced cylinder surface temperature, leads to
- Higher loaded engines (downsizing)

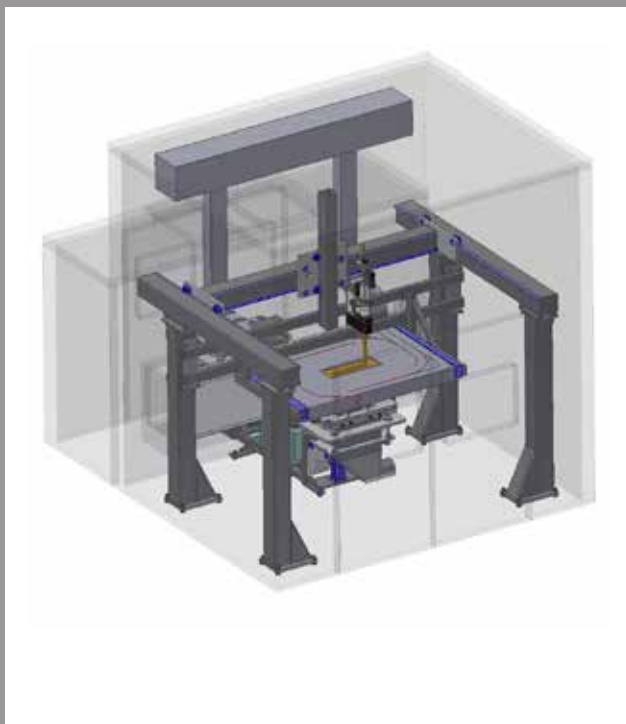


Mechanically roughened surface:
Dove tail profile

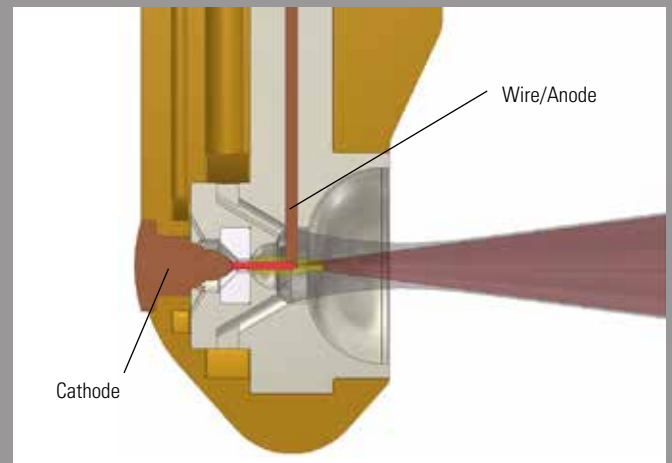


Honed surface of a Thermal
sprayed coating

Also the remanufacturing of worn engines is another application for RSW technology. A non automotive application is the internal coating of pipes and tubes. Suitable IDs from 65mm up to 250mm.



Scheme of a series module



RSW torch head

Due to the new design the RSW torch is able to operate with up to 150A, melting 10kg steel per hour.

The molten wire tip is atomized and droplets are accelerated towards the substrate (bore hole wall) by compressed air or Nitrogen. This leads to solidification of the particles on the prepared surface (mechanically roughened) and formation of lamellar coatings with defined porosity.



RSW Turn Key Coating Center for engine remanufacturing



Ever since the company was established in 1982, the name GTV has stood for top quality and a high level of delivery reliability for all types of thermal spray products.

GTV provides its customers with many years of experience in all aspects of the high-technology field of thermal spray technology, enabling them to make use of the effective and efficient GTV system solutions in order to gain a substantial competitive advantage in the market.



GTV

GTV Automotive GmbH
Gewerbegebiet „Vor der Neuwiese“, D-57629 Luckenbach, Germany
Phone: +49 (0)2662 946864-0, Fax: +49 (0)2662 946864-30
E-Mail: office@gtv-automotive.de, Internet: www.gtv-mbh.de

North American Representative
Spraywerx Technologies Inc.
Ph: 604-306-2061
info@spraywerx.com